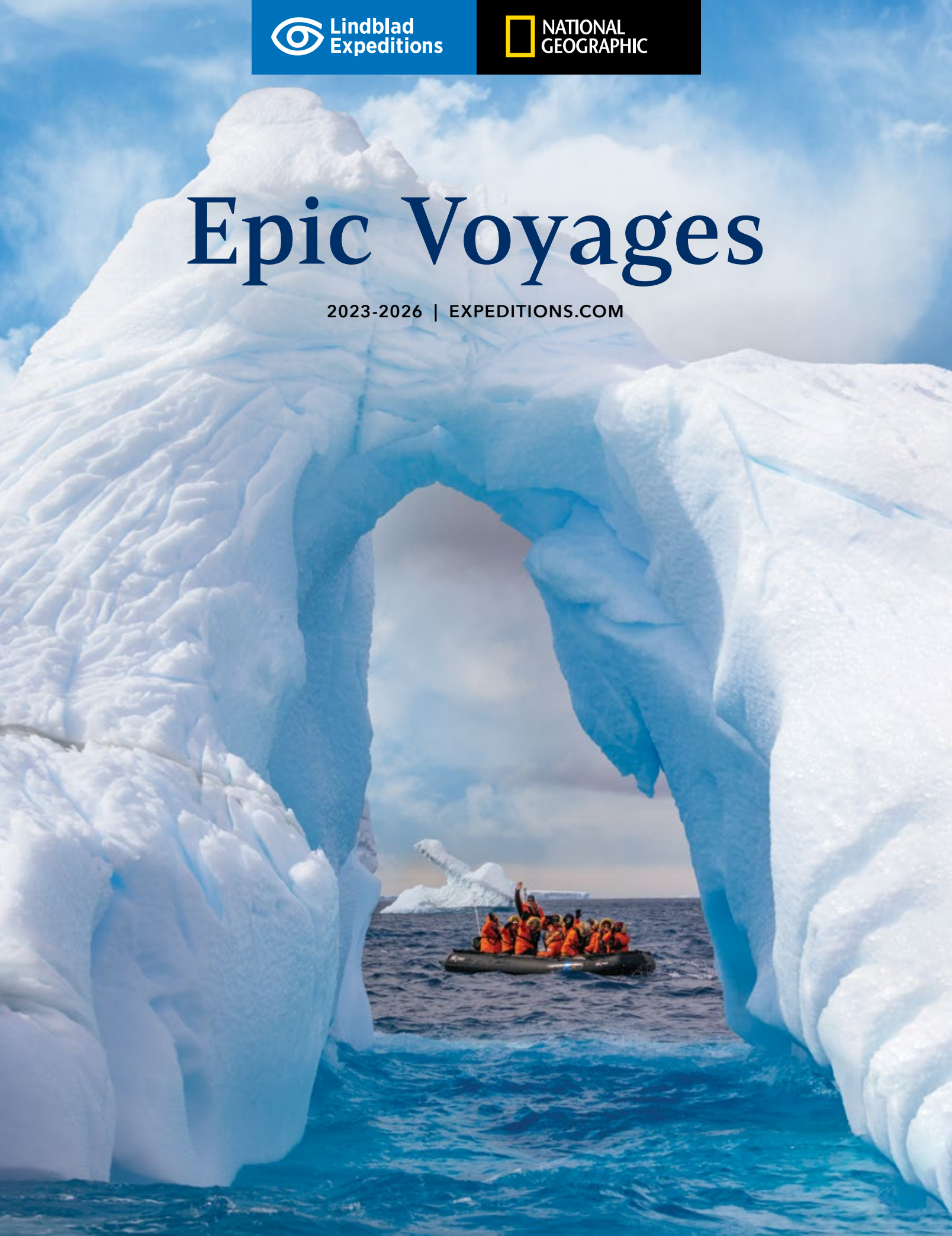


Epic Voyages

2023-2026 | [EXPEDITIONS.COM](https://www.lindblad.com/expeditions.com)





Some journeys only reveal their magnificence when they are given ample time to unfold. Our epic voyages are extraordinary opportunities to slow down and explore the world in a more encompassing way. On these extended expeditions, travel to some of the world's most remote and least visited destinations, enjoy time at sea to soak in your boundless oceanic surroundings, and delight in unforgettable travel experiences that can only come from chance and spontaneity.



Contents

Going Epic with Sven Lindblad	4
Stargazing at Sea	6
Epic Experiences	8
Enhancing Your Expedition Experience	10
Epic Expeditions	12
Our Ships	28
Special Offers & Reservation Information	30

Cover: Guests enjoying a zodiac cruise among icebergs at Joinville Island, Antarctica. ©Andrew Peacocok

This page: Buller's Albatross in flight, New Zealand. ©Ralph Lee Hopkins

Going Epic

with Sven Lindblad

Sven Lindblad, founder and CEO of Lindblad Expeditions, remembers vividly the impact of his first epic voyage—a 35-day adventure around New Zealand, Antarctica, and Argentina. Ever since, he has made these journeys a mainstay of our offerings, much to the delight of loyal guests. In this conversation, Lindblad explains how the legacy of ‘going epic’ is proudly carried on in one-of-a-kind experiences across great swaths of our planet.



What are ‘epic’ voyages?

At Lindblad Expeditions-National Geographic, we have voyages of all lengths—some are five days, some are more than 30 days. Our epic voyages are longer voyages that cover more territory. We’ve developed these trips for a couple of reasons. First, we recognize that many of our guests really enjoy them. But also, there are certain parts of the world where, if you don’t spend the time, you’re not going to have as extraordinary of an experience.

What are some of the benefits of longer expeditions?

Sometimes it’s nice to slow down and get into a rhythm, build a pace where you can calm down and settle in. That’s one of the big benefits of these voyages—life aboard the ship becomes more interesting. You’re not just a guest, you’re somebody that everybody gets to know. You become integrated with the on-board community.



What is a 'sea' day? What are some of the best ways guests can spend their time during these days?

If I go back 20 or 30 years, Lindblad Expeditions would avoid sea days—days where you're not making a landing somewhere. I remember being on certain voyages and thinking, "I really wish there was a sea day to relax, maybe read a little bit, collect my thoughts, and organize my photographs."

We began to realize people appreciate periodic days where they can enjoy the sea or pursue whatever interests them. Maybe that's spending time on the bridge learning about navigation,

or having more in-depth conversations with our photographers or historians. Sea days are a welcome respite from the very active nature of the voyage.

Can you describe the sense of community that forms on board during an epic voyage?

I feel that some of the most interesting people I've ever met in my life I've met on our ships while traveling. Why? Because the people who travel on our ships are innately curious, and that immediately creates a kind of common bond. In the beginning of these voyages, there are different communities on board. But by the end, there's real common ground.

"We're out there to learn, to try new things, and to understand our world better. That is the essence of an expedition."

—Sven Lindblad



On an epic voyage to Antarctica, photographers enjoy time to capture the perfect shot of ice floes sparkling under the setting sun.



Stargazing at Sea

Author and National Geographic travel writer Andrew Evans is an authority on 'going epic.' His best-selling memoir, The Black Penguin, details his ambitious journey halfway around the world, which had him crossing swamps, deserts, mountains, and jungles in pursuit of his final destination: Antarctica. He recently traveled with Lindblad Expeditions-National Geographic on a transatlantic voyage that revealed surprising wonders of the sea and the night sky.

It takes extra effort to hear the silence our planet still offers. The dedicated wanderer must push past the known world of airports and hotel-lined beaches to the more untouched expanses that remain, like the east coast of Greenland or the uninhabited islands of the South Pacific.

Waking up in the middle of the ocean is a thrill. I fill my coffee mug and head out on the bow to catch up with the scenery. Standing on the deck of a ship, the wind on my face, I bear witness to the blue parts on the map. The ocean changes by the hour, from whitecapped and choppy to creased blue leather to shiny splotches of sunbeams that paint the grey waves silver. There are moments at sea of spectacular beauty that people on land will never understand.

To sail with Lindblad Expeditions-National Geographic is to pursue adventure daily. For me, so much of that adventure takes place on the water—in between the



“destinations” that are listed in the brochure. There is no limit to what one sees at sea. I have seen tropic birds and fairy terns flying infinity loops overhead. I have seen a sperm whale as long as a school bus, swimming alongside our vessel and sending up tall spouts of whale breath before diving below. And I have seen stars like never before.



Somewhere past the Tropic of Capricorn but still a few days before the equator, the ocean turns to blue jello. Our ship glides onward, barely leaving a wake. Before dinner we head out to the aft deck to look for the green flash. The sun drops below the horizon and then it comes—a split second of blinding green. We all gasp. After dinner, we head to the bow for an astronomy talk. The sky is clear and brilliant with hundreds and hundreds of stars. There is the Southern Cross. There is Taurus. There is Leo. All seven of the sisters. Mars, too. And way over there, shining perfect and unmoving is Polaris—the north star, guiding our way.

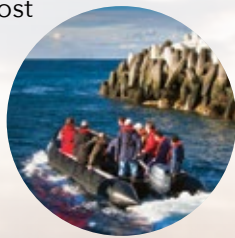
We sail on through a sea of stars and once more, I recognize the well-known secret—that our ocean is the destination. This is the place that most people miss—between all the other places—beautiful and fascinating and full of life.

Epic Experiences for Adventurous Travelers

The extended voyages in our portfolio afford travelers the rare opportunity to sail places far off the beaten path, where endemic creatures and ancient cultures thrive beyond the reaches of the outside world. Embrace your inner explorer and join us for the most epic experiences we have to offer, in wild and remote destinations that defy the imagination.

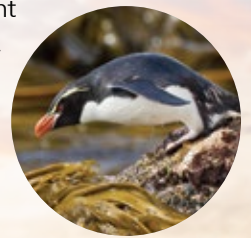
Visit the World's Most Remote Inhabited Isle

Discover Tristan da Cunha—the most remote inhabited island on the planet—and meet its residents to glimpse their unique way of life, cultivated far from the rest of humanity and in the shadow of an active volcano.



Spot Rare Penguin Species

Delight in the chance to spot eight of the world's 18 penguin species—including four found only in New Zealand—on a journey to the remote Subantarctic islands, a critical breeding grounds for endemic and endangered wildlife.



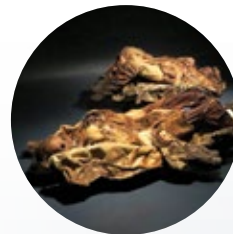
Dive into the Coral Triangle

The Raja Ampat reef system sits at the heart of the Coral Triangle and harbors 1,500 types of fish and five sea turtle species. Swim, snorkel, kayak, or dive in this epicenter of sea life, and go ashore on nearby islands to encounter ancient Asmat culture.



See Mummies From an Icy Realm

Explore Greenland's ancient human history at the archaeological site of Qilakitsoq, where the mummified remains of a Thule family—the subject of a 1985 *National Geographic* cover story—were unearthed. See four of these well-preserved mummies at the Greenland National Museum in Nuuk.



Set Out on an Arctic Safari

With binoculars in hand, trace the coast of Ellesmere Island, ready to spot polar bears, walruses, ringed seals, beluga whales, and—if we are lucky—narwhals. Then set out across this virtual terra incognita, walking with no set path and one goal: to find the elusive muskox.



Stand Amid Colossal Wildlife Colonies

Feel the thrill of being vastly outnumbered by the curious creatures of South Georgia, home to the highest density of wildlife on Earth. Stroll a beach inhabited by more than 100,000 king penguins, and witness vast colonies of nesting albatrosses.



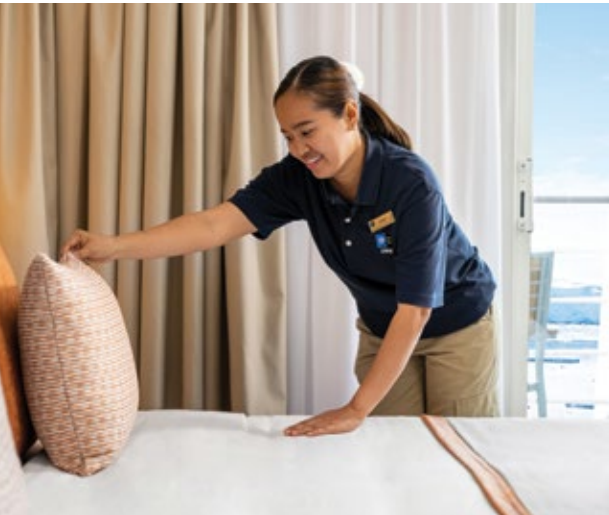
Enhancing Your Expedition Experience

Your passion for exploration always inspires us to find new ways to enhance your expedition experience. For upcoming epic voyages, an array of ship upgrades and special offers invite fresh opportunity for discovery.

Enhancements to Our Polar Fleet

We are thrilled to announce that our popular sister ships, *National Geographic Endurance* and *National Geographic Resolution*, have each been outfitted with additional cabins to accommodate more travelers. Now, up to 138 guests can sail aboard these in-demand vessels in epic destinations from Antarctica to Greenland and beyond.

National Geographic Explorer, another member of our polar fleet, has also debuted a new look. Her suites were recently enhanced with a sleek, Scandinavian design, as well as Command Centers that allow guests to explore from the comfort of their cabins with a curated set of exploration tools.



A member of our crew readies a room for a guest's arrival; a newly renovated suite aboard National Geographic Explorer; a Category 1 cabin aboard National Geographic Endurance.

An Exclusive Culinary Journey

Meals aboard our fleet are designed to showcase your destination through delicious fare that is sustainably sourced whenever possible, and special on-board experiences offer the opportunity to connect more deeply to your destination. Every guest traveling on *National Geographic Resolution* and *National Geographic Endurance* will receive an invitation to a private dinner that delves into the history of exploration through a refined, seven-course tasting menu. Each of these exceptional meals is paired with wines from sustainably minded vintners, as well as a nightcap that nods to the theme of the evening.

Travel With Inspiring Experts

Explore the world in good company—including National Geographic Experts—who offer in depth insights about the places we explore. From accomplished scientists and explorers to renowned authors and world leaders, these inspiring individuals travel alongside us on select departures, giving compelling lectures and engaging in lively conversations with our guests. Visit expeditions.com/epic.

Stay Connected With Starlink

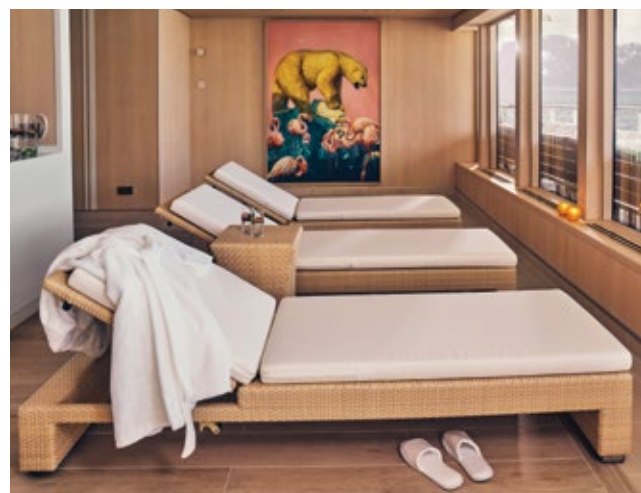
Get your Wi-Fi connection at sea with Starlink, the world's largest satellite constellation. This year we are rolling out Starlink across our fleet of expedition ships. Starlink will provide a more reliable internet connection and better coverage on our remote itineraries.

Suite Exclusives

The new Suite Exclusives package gives guests staying in eligible cabins access to an array of amenities designed to enhance your on-board experience, including priority booking for spa treatments and igloo stays (select ships), an in-room espresso maker, complimentary laundry, and other exclusive perks. Learn more at expeditions.com/suites.

Special Offers

To increase the ease of travel to and from your expedition—and to enhance your experience on board—we offer a number of benefits to guests on our epic voyages. Enjoy perks such as air and hotel credits, complimentary Wi-Fi and laundry, savings for solo travelers, reduced cabin fares when you book back-to-back voyages, and more. See page 30 for details.




New



Acropolis in Athens, Greece

A Voyage Through Antiquity: From Egypt to the Iberian Peninsula

 22 DAYS / FROM \$17,505pp
2024 Apr.
National Geographic Explorer

Visit expeditions.com/epicmed for itinerary details and current rates

SPECIAL OFFERS

Book by Oct. 31, 2023:

- 20% solo traveler savings.
 - Extend your stay with \$1,000 per cabin hotel credit.
- See page 30 for terms.

HIGHLIGHTS

- Explore the greatest sights of antiquity, including **the Pyramids of Giza, Bibliotheca Alexandria, Palace of Knossos, and the Parthenon.**
- Experience **local culture** as you sample **regional delicacies** and explore fishing villages and souks.
- Encounter vestiges of the ancient **Egyptian, Greek, Roman, Ottoman, and Minoan civilizations** alongside expert historians and archaeologists.
- Navigate the **Suez Canal**, an engineering marvel and major trade corridor cut through expansive desert landscapes.
- Learn about **Sardinia's 2,000-year-old mining history** and, in **Corsica**, discover one of the largest array of **menhirs** in the Mediterranean.

SPECIAL GUESTS

Join National Geographic Photography Experts **David Doubilet, Jennifer Hayes, and Macduff Everton.**



Gateway to the Northwest Passage: Greenland & Canada



24 DAYS / FROM \$43,895pp
2024-2025 Aug.
National Geographic Endurance

Visit expeditions.com/epicgreen for itinerary details and current rates

HIGHLIGHTS

- Venture into the **fabled Northwest Passage, and travel well above 80° North**, and learn dramatic stories of explorers and adventurers who sought this magnificent, icy frontier.
- Glide between soaring icebergs at the mouth of Greenland's **Ilulissat Icefjord, a UNESCO World Heritage site.**
- Visit the **"Jewel of the North," Pond Inlet**, a small Inuit community known for its friendly community and artists haven for world-renowned soapstone carvings.
- Explore remote Ellesmere Island and be on the lookout for **polar bears, walruses**, ringed seals, belugas, bowhead whales, and the **elusive narwhal.**
- Capture your best images alongside a **National Geographic Photography Expert.**

SPECIAL OFFERS

Book by Oct. 31, 2023:

- \$2,000pp air credit on select 2024 Arctic departures of 10 days or more.
- Extend your stay with \$1,000 per cabin hotel credit.

Book by Dec. 1, 2023 to lock in 2025 rates and more.

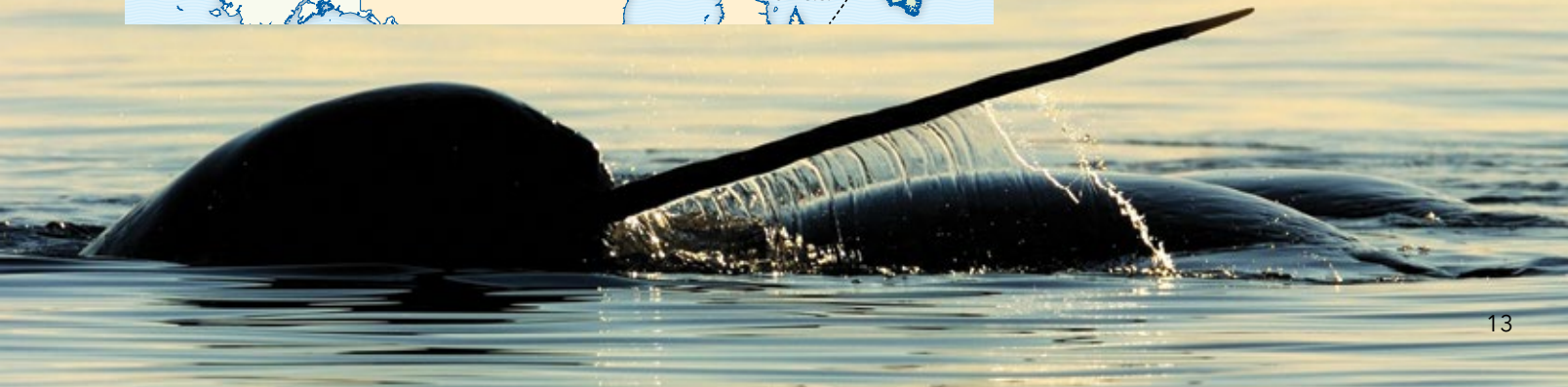
See page 30 for terms.

SPECIAL GUESTS

National Geographic Explorer **Wade Davis** and National Geographic Photography Expert **Ralph Lee Hopkins** join in 2024.



Narwhals showing tusks above water, Canada.





Polar Bear, Ilulissat Icefjord, Disko Bay.

Northwest Passage: Greenland to Alaska



23 DAYS / FROM \$47,334pp
 2025 Aug.
National Geographic Resolution

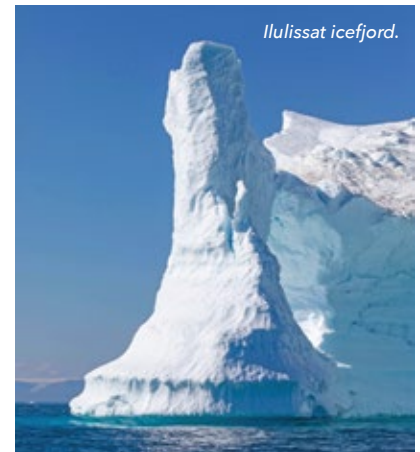
SPECIAL OFFER

Book by Dec. 1, 2023 to lock in 2025 rates and more.
 See page 30 for terms.

Visit expeditions.com/nwpassage for itinerary details and current rates

HIGHLIGHTS

- Sail aboard our new, state-of-the-art polar ship to the **northernmost coastlines of the planet**, where few have explored before.
- Venture into the fabled **Northwest Passage** and learn dramatic stories of explorers and adventurers who sought this magnificent, icy frontier.
- Slide between soaring icebergs at the mouth of **Greenland's Ilulissat Icefjord**, a UNESCO World Heritage site.
- Visit one of Canada's "jewels of the north": **Pond Inlet**, a small Inuit community known for soapstone carvings.
- Observe **polar bears, walrus, ringed seals, belugas, and bowhead whales**, and capture your best images alongside a **National Geographic photography expert**.



Ilulissat icefjord.



Iceland & Greenland: Edge of the Arctic

18 DAYS / FROM \$23,350pp



2024 Aug. / 2025 Jul.

National Geographic Endurance

National Geographic Resolution

Visit expeditions.com/arcticedge for itinerary details and current rates

HIGHLIGHTS

- Hike the dramatic **Dynjandi Waterfall** in Iceland's remote **Westfjords peninsula**, and visit a farm that produces eiderdown.
- Delve into **Greenlandic culture** with visits to **Ummannaq** and **Qilakitsoq** to see the archaeological site of the **5,00-year-old mummies** and visit the **National Museum** in Nuuk where they can be viewed.
- Cruise among the **dazzling icebergs calved by the Ilulissat Icefjord** and search for whales amid impressive tidewater glaciers in West Greenland.
- Experience **local culture** through visits to fishing villages and longhouses, folk performances, and tasting tours of **traditional Greenlandic and Icelandic foods**.
- Extend your expedition with a tour of the **Golden Circle**.

SPECIAL OFFERS

Book by Oct. 31, 2023:

- \$2,000pp air credit on select 2024 Arctic departures of 10 days or more.

- Extend your stay with \$1,000 per cabin hotel credit.

Book by Dec. 1, 2023 to lock in 2025 rates and more.

See page 30 for terms.

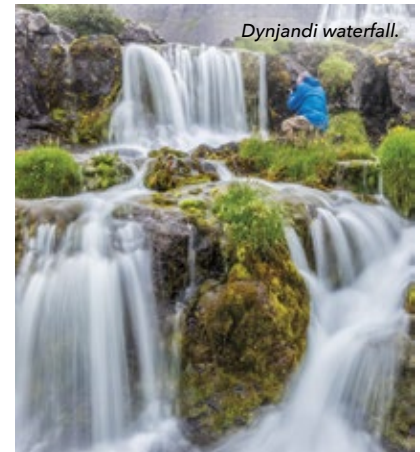
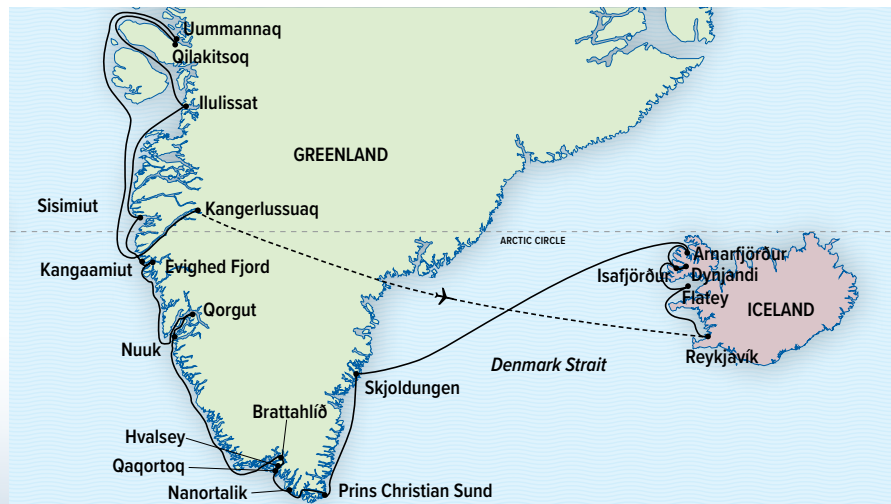
SPECIAL GUESTS

Join Geologist and Professor **Minik**

Rosing and National Geographic

Photography Expert **Jason Matthews**

on Aug. 6, 2024.



Dynjandi waterfall.

Zodiac cruising through Ilulissat Ice Fjord, Greenland.



South Georgia & The Falklands

19 DAYS / FROM \$25,711pp



2024 Feb., Oct. / 2025 Feb.

National Geographic Endurance

National Geographic Resolution

Visit expeditions.com/southgeorgia for itinerary details and current rates

HIGHLIGHTS

- South Georgia explodes with life: colonies of **macaroni penguins**, and **8,000-lb. elephant seals**. An astonishing **100,000 king penguins** will stop you in your tracks.
- Get close-up views of **magnificent black-browed albatross** and irresistible **rockhopper penguins** in the Falklands.
- Paddle a kayak and Zodiac cruise in quiet bays. Capture your best images alongside a **National Geographic Photography Expert**.
- **Trace the story of Shackleton's fateful 1914-16 journey** and toast "The Boss" at his gravesite in South Georgia.
- Extend your expedition: Explore the art and architecture of **Buenos Aires**, or enjoy the culinary scene in **Santiago**. Visit magnificent **Iguazú Falls**, or mysterious **Easter Island**.

SPECIAL OFFERS

Book by Oct. 31, 2023:

- Air included up to \$5,000pp.
- Waive the solo premium.
- Extend your stay with \$1,000 per cabin hotel credit.

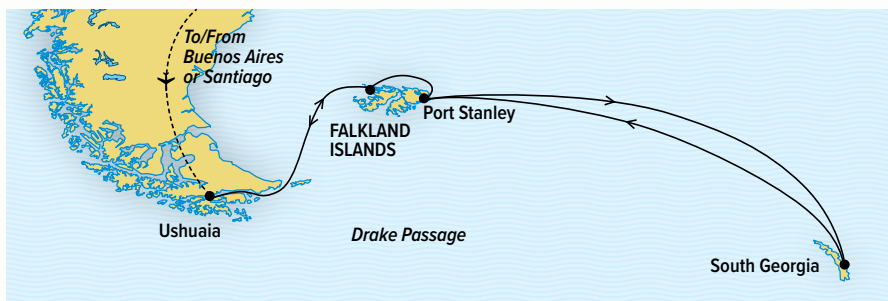
Select departures only.

Book by Dec. 1, 2023 to lock in 2025 rates and more.

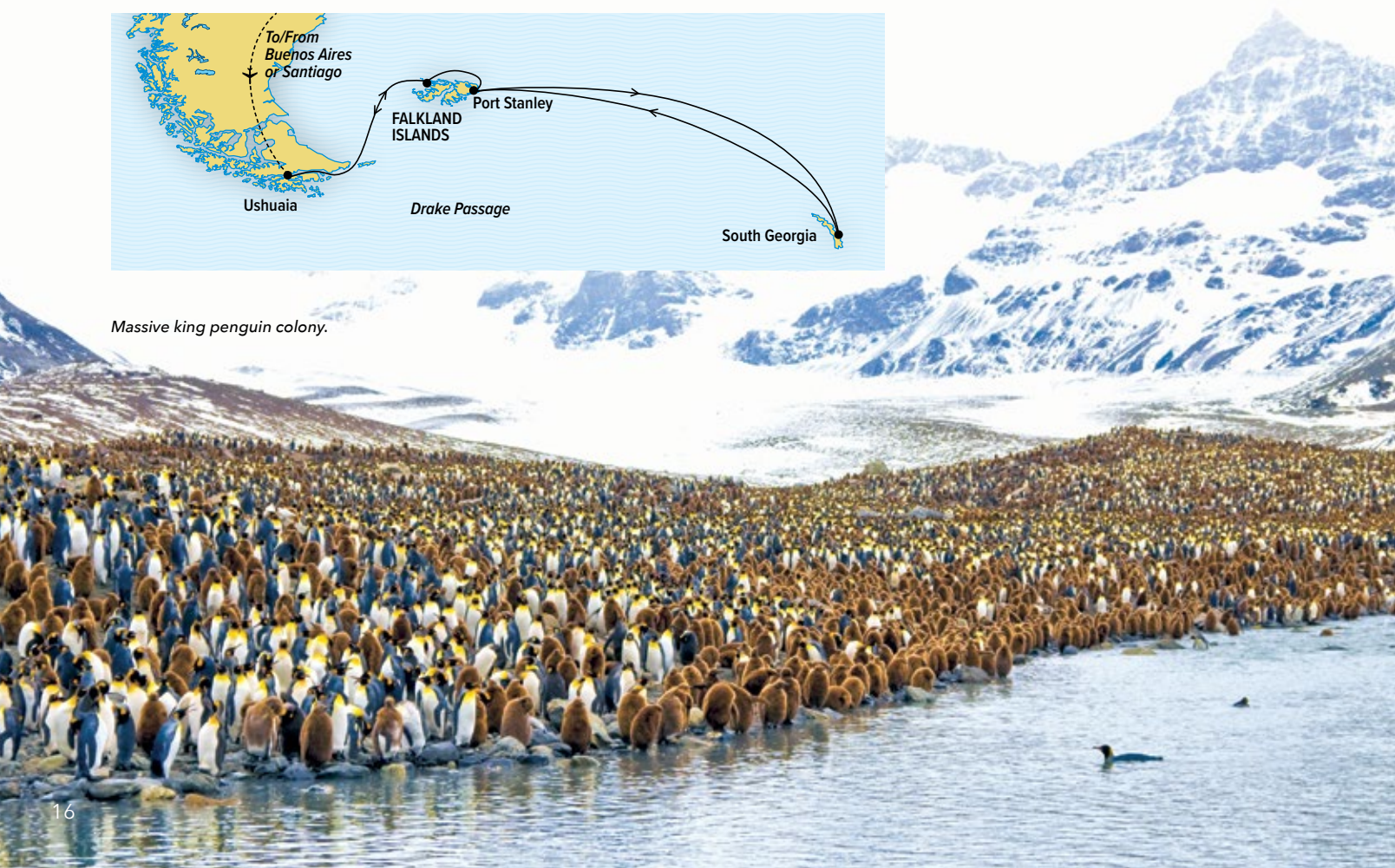
See page 30 for terms.

SPECIAL GUEST

Mensun Bound, marine archeologist, and Director of Exploration for the Mar. 2022 discovery of Shackleton's *Endurance*, will join us on Feb. 26, 2024.



Massive king penguin colony.





Royal penguins, Macquarie Island.

Epic Antarctica: From the Peninsula to the Ross Sea & Beyond

35 DAYS / FROM \$56,700pp



2023 Dec / 2024 Jan., Dec. / 2025 Jan., Dec. / 2026 Jan.
National Geographic Endurance
National Geographic Resolution

Visit expeditions.com/epic-antarctica for itinerary details and current rates

HIGHLIGHTS

- Join this **epic exploration** of seldom-seen locations where **few have been before**, and where wildness and wildlife are at their finest.
- Observe endemic royal penguins, gentoo, and southern rockhopper penguins, and **100,000 pairs of king penguins** on a single beach.
- Enjoy eight days of exploration in the **Ross Sea** where you can witness first-hand the Ross Ice Shelf, the **world's largest ice shelf**—the size of France!
- Witness the unique wildlife, plants, invertebrates, and birds of **Macquarie Island, Australia** found nowhere else in the world.
- Explore with special permission the seldom-seen **Subantarctic islands of New Zealand and Australia, a UNESCO World Heritage site.**
- Extend your expedition: Spend time in historic **Buenos Aires**, experience the culinary scene in **Santiago**, visit magnificent **Iguazú Falls**, or explore the mysterious **Easter Island**.



SPECIAL GUESTS

Join National Geographic Photography Experts **Chris Rainier** on Dec. 28, 2023 and **Nick Cobbing** on Dec. 20, 2024.

SPECIAL OFFER

Book by Dec. 1, 2023 to lock in 2025 rates and more. See page 30 for terms.

Antarctica, South Georgia & the Falklands



24 DAYS / FROM 27,200pp

2023 Oct., Nov., / 2024 Feb., Oct. / 2025 Jan., Feb., Oct.,

Nov. 2026 Feb.

National Geographic Explorer, National Geographic Endurance, National Geographic Resolution

Visit expeditions.com/asgf for itinerary details and current rates

HIGHLIGHTS

- This voyage has it all: the **impossible beauty of Antarctic ice**, the **vast king penguin colonies** of South Georgia, and the Falkland's amazing **albatross colonies**.
- Explore by **Zodiac, kayak, and on foot** using our arsenal of cool tools for exploration.
- In South Georgia, be greeted by **100,000 king penguins**. See the Falklands' impressive colonies of **nesting albatross and rockhopper penguins**.
- **Trace the story of Shackleton's fateful 1916 journey** and toast "The Boss" at his gravesite in South Georgia.
- Get your best shots ever with a **National Geographic Photography Expert** at your side.
- Conditions permitting, early season departures offer the possibility to **cross-country ski**—on the frozen sea ice.
- Extend your expedition: Spend time in historic **Buenos Aires** or enjoy **Santiago's** culinary scene. Or visit the magnificent **Iguazú Falls**, or mysterious **Easter Island** after.

SPECIAL OFFERS

Book by Oct. 31, 2023:

- Air included up to \$5,000pp.
- Extend your stay with \$1,000 per cabin hotel credit.

Select departures only.

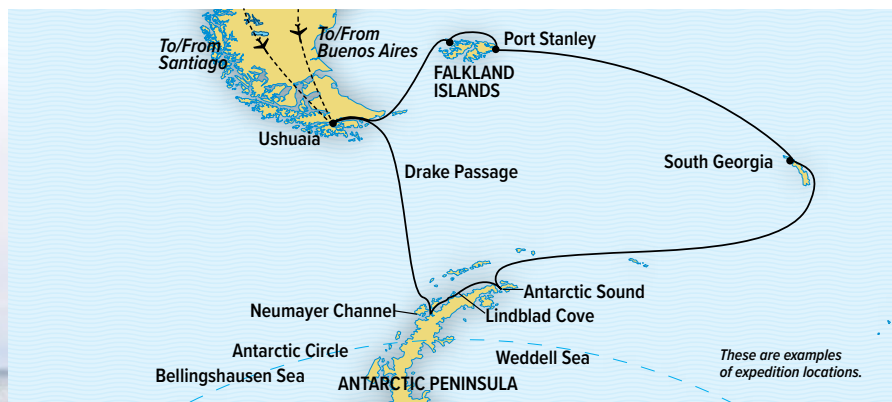
Book by Dec. 1, 2023 to lock in 2025 rates and more.

See page 30 for terms.

SPECIAL GUESTS

Peter Hillary, son of mountaineer Sir Edmund Hillary, and the first second-generation climber to summit Mount Everest, will join us Oct. 30, 2024.

Join National Geographic Photography Experts **Susan Seubert** on Nov. 17, 2023, and **James Dickman** on Feb. 15, 2024.



King penguins, South Georgia.





Guanaco in Torres del Paine National Park.

Antarctica & Patagonia: Legendary Ice & Epic Fjords

20 DAYS / FROM \$22,090pp



2023 Nov. / 2025 Feb., Oct.

National Geographic Explorer

National Geographic Resolution

Visit expeditions.com/epicfjords for itinerary details and current rates

HIGHLIGHTS

- These are **places of unimaginable beauty**, where **humpback whales breach and penguins gather**, icebergs shimmer and sapphire-hued fjords harbor virgin forests.
- Experience the celebrated wonders of the **Antarctic Peninsula, southern Patagonia, and the Chilean fjords**—all in a single, epic voyage.
- Seek out **Antarctica’s iconic wildlife**—including penguins, leopard seals, and orcas.
- Navigate Chile’s coastal fjords and explore spectacular **“Glacier Alley,”** where monumental glaciers calve into the sea.
- Explore beneath the snowcapped “horns” of **Torres del Paine National Park**, discover private reserves such as Karukinka, and cruise **Chile’s newest marine park**.
- Extend your expedition: Get a taste for **Santiago’s** famous valley wine region, or explore historic **Buenos Aires**. Take advantage of the proximity and visit mysterious **Easter Island**.



SPECIAL GUEST

Join National Geographic Expert **Kiliii Yuyan** on Nov. 15, 2023.

SPECIAL OFFER

Book by Dec. 1, 2023 to lock in 2025 rates and more.
See page 30 for terms.



Pia Glacier, Chilean Patagonia.

Southern Patagonia: Glaciers, Fjords & Wildlife

19 DAYS / from \$22,556pp



2024 Mar. / 2026 Feb.

National Geographic Endurance

National Geographic Resolution

Visit expeditions.com/glaciers for itinerary details and current rates

HIGHLIGHTS

- Glaciers carved the **landscapes of Patagonia and the Chilean fjords**. Now it's a place for the grandest nature adventures: witness calving glaciers, hike rugged landscapes, and more.
- Aboard *National Geographic Endurance*, glide into Patagonia's "**Glacier Alley**" and navigate among floating icebergs by Zodiac and kayak.
- Explore iconic **Torres del Paine National Park** with our expert naturalist staff.
- Discover **private reserves such as Karukinka** and enjoy special access to Argentina's **extraordinary Isla de los Estados (Staten Island)**.
- Visit a marine reserve on the Chilean coast where **humpback whales and dolphins gather**, view Cape Horn, and visit **Magellanic penguins on Isla Magdalena**.
- Extend your expedition in vibrant **Buenos Aires**, or stunning **Iguazú Falls**.



SPECIAL OFFERS

Book by Oct. 31, 2023:

- Free round-trip air.
- Waive the solo premium.
- Extend your stay with \$1,000 per cabin hotel credit.

Select departures only.

Book by Dec. 1, 2023 to lock in 2026 rates and more.

See page 30 for terms.

SPECIAL GUEST

Join National Geographic Photography Expert **Todd Gipstein** on the May 12, 2024 departure.

Cape to Cape: A Voyage from Cape Horn to Cape Town



20 DAYS / FROM \$22,850pp

2024 Mar.

National Geographic Explorer

Visit expeditions.com/capetocape for itinerary details and current rates

HIGHLIGHTS

- Visit the vast **king penguin colonies on South Georgia**—tens of thousands on a single beach.
- **See rockhopper penguins and albatrosses on remote Tristan da Cunha Island** in the South Atlantic and meet some of the 250 hardy residents who live there.
- Enjoy a **rich program of lectures by an expert team of naturalists, historians, and photographers**; and take advantage of the ship's many amenities, from wellness programs and spa treatments to gourmet dining options and wine tastings.
- Spend a day in **one of the world's most beautifully situated cities, Cape Town**, traveling to the top of Table Mountain for sweeping views and admiring the unusual flora at the renowned Kirstenbosch Botanical Garden.
- **Spot rare birds and other wildlife** on the uninhabited and seldom-visited Nightingale and Inaccessible islands.

SPECIAL OFFERS

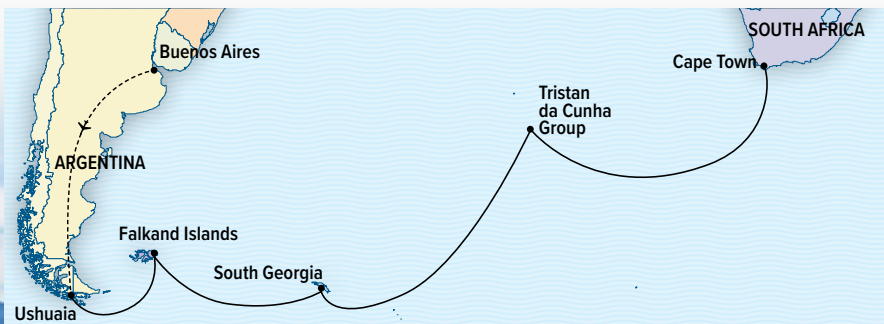
Book by Oct. 31, 2023:

- 25% solo traveler savings.
- **Discovery Package:** Receive a \$2,000pp air credit, unlimited enhanced Wi-Fi, a \$250 laundry credit, and a commemorative jacket and backpack.
- Extend your stay with \$1,000 per cabin hotel credit.

See page 30 for terms.

SPECIAL GUEST

Join maritime archaeologist and historian **Dr. James P. Delgado** on the Mar. 2024 departure.



King penguins, South Georgia.



New



Promenade walk into Camara de Lobos, Madeira.

Islands of the Atlantic Ridge: Brazil to the Azores



24 DAYS / FROM \$29,390pp
2024 Apr.

National Geographic Endurance

Visit expeditions.com/atlanticridge for itinerary details and current rates

HIGHLIGHTS

- Explore rarely seen, remote islands with **deep-seated cultures, unique cuisines, and seafaring traditions.**
- Enjoy **special access to the unspoiled islands of Fernando De Noronha**, a World Heritage site.
- Learn about the 18th century Atlantic Slave Trade at the Cape Verde Islands and walk through a **UNESCO World Heritage-designated old town.**
- **Search for marine life**, including dolphins and sperm whales, plus the possibility of blue whales, orcas, and pilot whales.
- Enjoy a **rich program of lectures by an expert team of naturalists, historians, and photographers**; and take advantage of the ship's state-of-the-art amenities.

Permits to navigate certain parts of Brazil are pending. Guests will be notified immediately if there are itinerary changes due to permits.

SPECIAL GUEST

Join National Geographic Expert **David Braun** on the Apr. 2024 departure.



SPECIAL OFFERS

Book by Oct. 31, 2023:

- 25% solo traveler savings.
- Discovery Package: Receive a \$2,000pp air credit, unlimited enhanced Wi-Fi, a \$250 laundry credit, and a commemorative jacket and backpack.
- Extend your stay with \$1,000 per cabin hotel credit.

See page 30 for terms.

A Journey from Nome to Tokyo: Ring of Fire to AINU Culture



21 DAYS / FROM \$30,958pp

2024 Aug.

National Geographic Resolution

Visit expeditions.com/nometotokyo for itinerary details and current rates

HIGHLIGHTS

- Witness a **profusion of rare wildlife** in Alaska’s Pribilof and Aleutian Islands: from northern fur seals to Steller’s sea eagles.
- Spot the **sacred red-crowned crane** on a visit to the wetlands of Kushiro in Hokkaido, and learn about the culture of Hokkaido’s indigenous Ainu people.
- Delve into the history of the **shoguns and samurai** while visiting castle ruins in Sendai, the Tokugawa hub of Mito, and the spectacular Kairakuen gardens.
- Enjoy a **rich program of lectures by an expert team of naturalists, historians, and photographers**; and take advantage of the *National Geographic Resolution’s* many amenities



Yamadera Temple

SPECIAL OFFERS

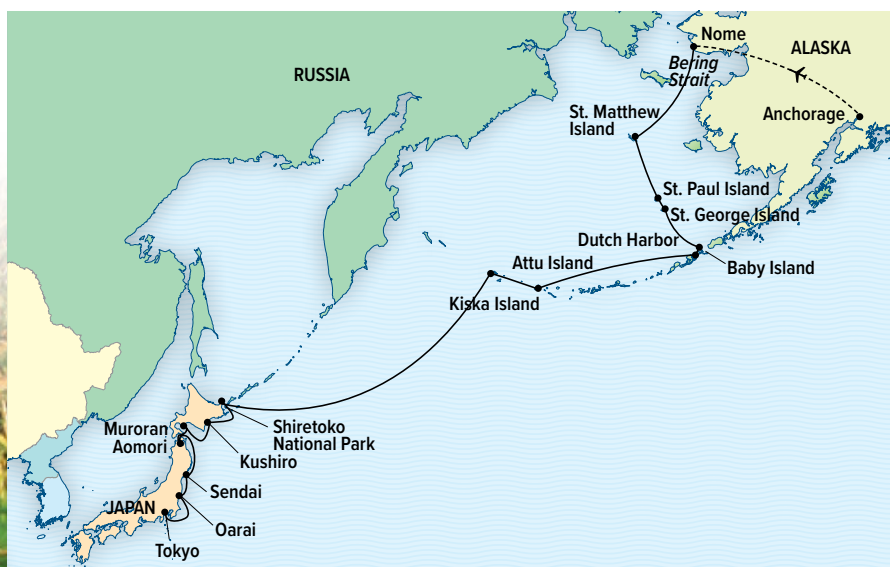
Book by Oct. 31, 2023:

- Air included up to \$5,000pp.
- Extend your stay with \$1,000 per cabin hotel credit.

See page 30 for terms.

SPECIAL GUEST

Join National Geographic Photography Expert **Chris Rainier** on the Aug. 2024 departure.



Red-crowned crane.



Southern Odyssey: New Zealand & the Subantarctic Islands

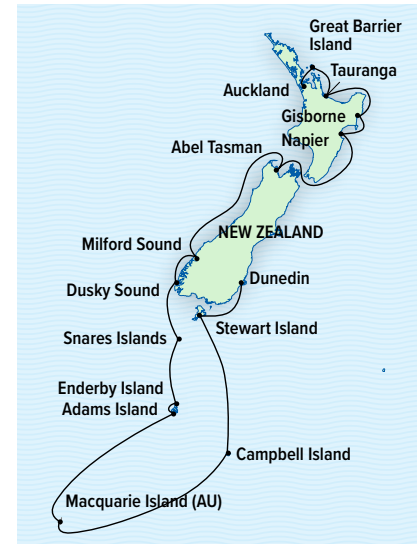


22 DAYS / FROM \$26,092pp
2023-2024 Nov., Dec.
National Geographic Orion

Visit expeditions.com/subant for itinerary details and current rates

HIGHLIGHTS

- Immerse yourself in unparalleled beauty: **scenic beaches and lush native forests in the North Island** and **deep fjords in the South Island**.
- Discover the history and dynamic culture of **New Zealand's Māori people**.
- Explore the **exclusive Subantarctic islands**, which are protected from human activity and home to a diverse collection of endemic flora and fauna.
- See **Macquarie Island**, a UNESCO World Heritage site and home to thousands of seals and **millions of penguins**.
- Visit the **golden sands of Abel Tasman National Park** or the **nooks and crannies of Marlborough Sounds**.
- Witness cultural riches, such as **Napier's Art Deco** architecture.



SPECIAL OFFERS

Book by Oct. 31, 2023:

- Air included up to \$6,000pp.
- Waive the solo premium.
- 20% off back-to-back voyages and bonus shipboard amenities.
- Extend your stay with \$1,000 per cabin hotel credit.

Select departures only.

See page 30 for terms.

SPECIAL GUEST

Join **Louis Henry Mitchell**, Artist-in-Residence and Director of Character Design at Sesame Workshop, on Dec 18, 2023.



Milford Sound.



Local musician, Owaraha, Solomon Islands.

Roots of the Pacific: Exploring New Zealand & Melanesia

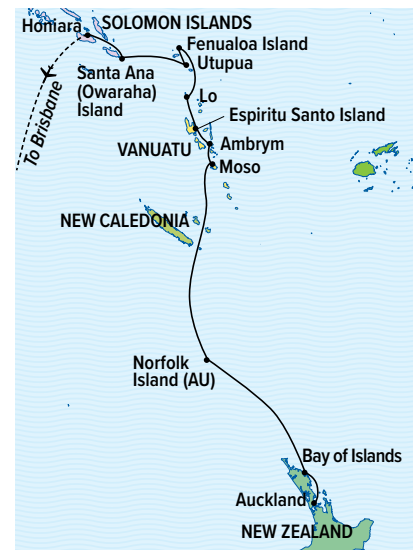


18 DAYS / FROM \$15,610pp
2023 Oct. / 2024 Jan., Oct., Dec.
National Geographic Orion

Visit expeditions.com/southerncross for itinerary details and current rates

HIGHLIGHTS

- Encounter an impressive diversity of cultures from the **Māori of the Bay of Islands** to the spear dancers of the **Solomons**, and delve into their artistic and spiritual traditions.
- Venture to the former penal colony of **Norfolk Island**, a UNESCO World Heritage site boasting unusual trees called Norfolk Island pines.
- Visit **New Caledonia's immaculate beaches and steep coral cliffs**, and hike into the tropical forest to a vanilla plantation or enjoy world-class snorkeling among diverse coral species.
- **Visit World War II sites** from the Battle of Guadalcanal, including an optional dive on the wreck of the S.S. President Coolidge.
- See the fantastic fishing canoes of **the people of Utupua** and take a Zodiac ride along their mangrove-studded lagoon.



SPECIAL GUESTS

Join National Geographic Expert **Wade Davis** in Oct. 2023, Environmental Journalist **Andrew Revkin** in Jan. 2024, and Author and Military Historian **Ian W. Toll** in Oct. 2024.

SPECIAL OFFERS

- Book by Oct. 31, 2023:
- Air included up to \$6,000pp.
 - Waive the solo premium.
 - 20% off back-to-back voyages and bonus shipboard amenities.
 - Extend your stay with \$1,000 per cabin hotel credit.
- Select departures only.
See page 30 for terms.



Asmat tribe escort us to shore.

Exploring Indonesia: Bali, Raja Ampat & Papua New Guinea



20 DAYS / FROM \$24,000pp
2024 May, Sep.
National Geographic Orion

Visit expeditions.com/asmat for itinerary details and current rates

HIGHLIGHTS

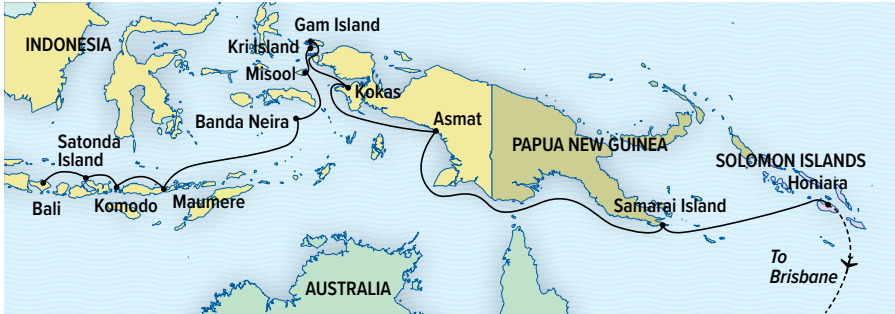
- Encounter Indonesia’s **vibrant cultures during traditional welcome ceremonies** and visits to remote island villages and markets.
- **Swim, snorkel, and dive** at spectacular reefs, isolated atolls, and ivory beaches of Kri Island and Misool in Raja Ampat and West Papua.
- Search for **Komodo dragons**, prehistoric creatures that can reach nine feet, in Komodo National Park.
- Discover the **timeless traditions and exquisite art of the Asmat region** while exploring its stilt villages by Zodiac.
- Go on a birding walk to try to spot the ethereal red **bird-of-paradise**.

SPECIAL OFFERS
Book by Oct. 31, 2023:

- Air included up to \$5,000pp.
- Waive the solo premium.
- 20% off back-to-back voyages and bonus shipboard amenities.
- Extend your stay with \$1,000 per cabin hotel credit.

Select departures only.
See page 30 for terms.

SPECIAL GUEST
Join **Valerie Taylor**, Conservationist, Photographer, Filmmaker, and member of the diving hall-of-fame, on May 8, 2024.



Kimberley Expedition: Northwest Australia & Indonesia



16 DAYS / FROM \$16,577pp
2024 May, Jun., Jul.
National Geographic Orion

Visit expeditions.com/kimb-indo for itinerary details and current rates

HIGHLIGHTS

- Discover dramatic landscapes etched with **ancient human history in the Kimberley**.
- Sail to **remote island villages of Indonesia** where history comes alive in traditional ceremonies and learn the history of the Moluccas, fought over among English, Portuguese, and Dutch colonizers.
- Search for spectacular wildlife, from the giant saltwater crocs of the Kimberley to prehistoric **Komodo dragons in Komodo National Park**.
- Snorkel and dive at pristine **Rowley Shoals** among untouched coral gardens—one of Australia’s best dive and snorkel sites.
- Experience both **Gwion Gwion and Wandjina rock art** dating from 4,000 to 12,000 years in age.



SPECIAL OFFERS

Book by Oct. 31, 2023:

- Air included up to \$5,000pp.
- Waive the solo premium.
- Extend your stay with \$1,000 per cabin hotel credit.

Select departures only.

See page 30 for terms.

King George Falls



National Geographic Endurance & National Geographic Resolution

138 guests in 76 outside cabins and suites

These next-generation expedition ships are truly in a class of their own—fully stabilized, highly strengthened, and rated in a top-tier ice class category (Polar Code 5 Category A). They are able to navigate polar passages year-round and safely explore uncharted waters, and the wave-slicing technology of the patented X-bow® ensures the smoothest ride possible. Superb amenities—such as outdoor infinity hot tubs, saunas, and twin glass igloos equipped for overnight stays—ensure luxuriant days at sea.

SEE MORE ONLINE:

Take a virtual tour and learn about *National Geographic Endurance* at expeditions.com/endurance and *National Geographic Resolution* at expeditions.com/resolution



Clockwise from top: Two Seven Zero® restaurant; One of two igloos available for overnight stays; Suite with balcony.





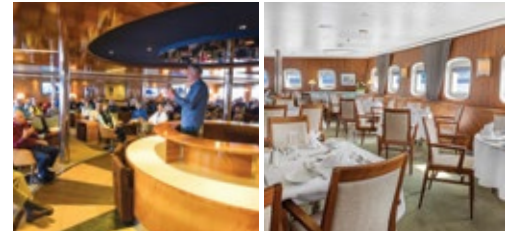
National Geographic Explorer

148 guests in 81 outside cabins and suites

Designed for in-depth exploration, she is the definitive expedition ship, capable of navigating both polar passages and temperate waters. Fully stabilized and with an ice-strengthened hull, she provides exceptional comfort, while her dynamic suite of exploration features—including an interactive chart room, a high observation lounge, and a low-profile bow with dramatic views—reflect a dedication to curiosity and wonder.

SEE MORE ONLINE:

Learn more about *National Geographic Explorer* at expeditions.com/explorer



Clockwise from top: Category 7 suite; The dining room has unassigned seating and an informal atmosphere; Enjoy daily presentations in the lounge.



National Geographic Orion

102 guests in 53 outside cabins and suites

This nimble vessel takes travelers to little-known parts of the South Pacific and its surrounding regions. Gracious and intimate, she fosters a spirited atmosphere on board, and amenities such as spa treatment rooms and a top-deck plunge pool and hot tub invite relaxation amid tropical surroundings. On select voyages, pre-qualified guests also have the option to scuba dive.

SEE MORE ONLINE:

Learn more about *National Geographic Orion* at expeditions.com/orion



Clockwise from top: Category 5 suite with French balcony; Observation lounge and library; Outside dining in the South Pacific.

Special Offers

2025-2026 EARLY BOOKING OFFERS – BOOK BY DEC. 1, 2023: Valid for new bookings only on departures from Jan. 1, 2025 through Mar. 31, 2026, subject to availability, and may not be combined with other offers. Call for details.

- **LOCK IN YOUR RATE:** Not applicable on airfare or extensions.

- **BOOK 2 OR MORE VOYAGES AND SAVE 10%:** Save 10% on the lowest priced departure when you book two or more expeditions, applicable on voyage fares only and not valid on extensions or airfare.

- **BRING A FRIEND:** Save 5% when you book two or more cabins on the same departure. Valid on voyage fares only and not applicable on extensions or airfare. Deposit, final payments, and cancellation policies for group travel vary from our regular policies when you book 8 or more guests.

BOOK BY OCT. 31, 2023: Offers are valid for new bookings only on select departures, subject to availability, and may not be combined with other offers. Call for details.

EXTEND YOUR STAY - \$1,000 HOTEL CREDIT: Receive \$1,000 per cabin credit, deducted from cabin fare prior to any additional applicable savings with the purchase of cabin fare. Extend Your Stay must be communicated at time of booking. Valid on select departures, not applicable on airfare or extensions.

UP TO \$2,000 AIR CREDIT ON SELECT 2024 ARCTIC VOYAGES: Receive a \$2,000 per person air credit on Arctic 2024 voyages of ten days or more, deducted from cabin fare prior to any additional applicable savings with the purchase of cabin fare, excluding *Northwest Passage: Greenland to Alaska*. Valid on select departures only. Not applicable on extensions.

ROUND-TRIP AIR INCLUDED UP TO \$5,000 FOR ANTARCTICA VOYAGES: Airfare included up to a ticket value of \$2,000 per person when booking a Category 1-5 cabin, including solo cabins, or up to \$5,000 per person when booking a Category 6 cabin or higher. To qualify for the offer, airfare must be ticketed by Lindblad Expeditions. In the case that airfare at the time of booking is higher than \$2,000 or \$5,000 per person (as applicable), guest will be required to pay any amount in excess of \$2,000 or \$5,000 per person (as applicable). Valid between Miami, Dallas, Boston, Washington DC, Los Angeles, Philadelphia, Chicago, New York or San Francisco and Buenos Aires or Santiago on select departures of *Antarctica, South Georgia and the Falklands, and South Georgia and the Falklands*. Baggage fees may be additional and seat assignments may not be guaranteed. Not applicable on extensions.

FREE ROUND-TRIP AIR FOR PATAGONIA VOYAGES: Receive free round-trip economy airfare between Miami, Dallas, or other select popular home city gateways and Buenos Aires or Santiago (excluding charter flights) with the purchase of cabin fare for eligible departures through Mar. 31, 2024. Free air is limited to flights recommended and ticketed by Lindblad Expeditions. If the recommended flight is not available at the time of booking, we reserve the right to issue a credit up to \$1,000. Baggage fees may be additional and seat assignments may not be guaranteed. Valid on select departures of *Southern Patagonia: Glaciers, Fjords & Wildlife*. Not applicable on extensions.

ROUND-TRIP AIR INCLUDED UP TO \$5,000 FOR JAPAN VOYAGES: Airfare included up to a ticket value of \$2,500 per person when booking a Category 1-5 cabin, including solo cabins, or up to \$5,000 per person when booking a Category 6 cabin or higher. To qualify for the offer, airfare must be ticketed by Lindblad Expeditions. In the case that airfare at the time of booking is higher than \$2,500 or \$5,000 per person (as applicable), guest will be required to pay any amount in excess of \$2,500 or \$5,000 per person (as applicable). Baggage fees may be additional and seat assignments may not be guaranteed. Valid on select departures of *A Journey from Nome to Tokyo: Ring of Fire to Ainu Culture* and not applicable on extensions.

ROUND-TRIP AIR INCLUDED UP TO \$5,000 FOR INDONESIA VOYAGES: Airfare included up to a ticket value of \$2,500 per person when booking a Category 1-4 cabin, including solo cabins, or up to \$5,000 per person when booking a Category 5 cabin or higher. To qualify for the offer, airfare must be ticketed by Lindblad

Expeditions. In the case that airfare at the time of booking is higher than \$2,500 or \$5,000 per person (as applicable), guest will be required to pay any amount in excess of \$2,500 or \$5,000 per person (as applicable). Baggage fees may be additional and seat assignments may not be guaranteed. Valid on select departures of *Exploring Indonesia: Bali, Raja Ampat & Papua New Guinea* and *Kimberley Expedition: Northwest Australia & Indonesia* and not applicable on extensions.

ROUND-TRIP AIR INCLUDED UP TO \$6,000 FOR NEW ZEALAND VOYAGES: Airfare included up to a ticket value of \$3,000 per person when booking a Category 1-4 cabin, including solo cabins, or up to \$6,000 per person when booking a Category 5 cabin or higher. To qualify for the offer, airfare must be ticketed by Lindblad Expeditions. In the case that airfare at the time of booking is higher than \$3,000 or \$6,000 per person (as applicable), guest will be required to pay any amount in excess of \$3,000 or \$6,000 per person (as applicable). Baggage fees may be additional and seat assignments may not be guaranteed. Valid on select departures of *Southern Odyssey: New Zealand & the Subantarctic Islands* and *Roots of the Pacific: Exploring New Zealand & Melanesia* and not applicable on extensions.

WAIVE THE SOLO PREMIUM: Waive the solo premium on solo cabins on select departures of *Antarctica, South Georgia and the Falklands, South Georgia & The Falklands, Southern Patagonia: Glaciers, Fjords & Wildlife, Southern Odyssey: New Zealand & the Subantarctic Islands, Roots of the Pacific: Exploring New Zealand & Melanesia, Exploring Indonesia: Bali, Raja Ampat & Papua New Guinea, and Kimberley Expedition: Northwest Australia & Indonesia*. Not applicable on airfare or extensions.

SOLO TRAVELER SAVINGS: Save 20% on solo cabins on select departures of *A Voyage Through Antiquity*. Save 25% on solo cabins on select departures of *Cape to Cape* and *Islands of the Atlantic Ridge*. Not on applicable on airfare or extensions.

DISCOVERY PACKAGE: Discovery package is per person and includes a \$2,000 air credit deducted from cabin fare prior to any additional applicable savings, complimentary Enhanced Wi-Fi, a \$250 laundry credit, and a commemorative jacket and backpack on select departures of *Cape to Cape: A Voyage from Cape Horn to Cape Town, and Islands of the Atlantic Ridge: Brazil to the Azores*. Discovery Package must be communicated at time of booking. Not applicable on extensions.

20% OFF BACK-TO-BACK VOYAGES & BONUS SHIPBOARD AMENITIES: Save 20% on consecutive back-to-back departures aboard *National Geographic Orion* in 2023 and 2024, and enjoy complimentary enhanced Wi-Fi and laundry on board. Applicable on voyage fares only and not valid on extensions or airfare. Valid on select departures of *Southern Odyssey: New Zealand & the Subantarctic Islands, Roots of the Pacific: Exploring New Zealand & Melanesia, and Exploring Indonesia: Bali, Raja Ampat & Papua New Guinea*.

BACK-TO-BACK EXPEDITION SAVINGS: Save 10% on consecutive back-to-back departures on select voyages. Applicable on voyage fares only and not valid on extensions or airfare.

BRINGING THE KIDS: We believe sharing an expedition with children is a life-enhancing experience. Take \$500 off for each child under the age of 18 on any departure. Not applicable on extensions or airfare.

SAVE 5% TRAVELING AS A GROUP: Save 5% when traveling as a group of eight or more adults over age 18. Valid on voyage fares only and not applicable on extensions or airfare. Deposit, final payments, and cancellation policies for group travel vary from our regular policies.

CELEBRATE LIFE'S MILESTONES: Celebrate a milestone with a group of eight or more and enjoy a special amenity package including: 5% savings on voyage fares, custom group photo, US\$150 shipboard credit for the group, and other special gifts. Milestone celebration to be communicated at time of booking. Not applicable on airfare or extensions. Deposit, final payments, and cancellation policies for group travel vary from our regular policies.

COMBINING OFFERS: Certain offers may be combinable for up to two savings opportunities except where noted otherwise. For example, travel with a group of eight or more on back-to-back voyages and take advantage of both savings.

Photo Credits: age fotostock/Alamy, Johan Bernekorn, Michele Burgess/Alamy, David Cothran, Rachid Dahnoun/Alamy, Brett Monroe Garner, Oivind Haug, Ralph Lee Hopkins, Imagebroker/Alamy, iStock, Jeff Mauritzen, Michael S. Nolan, Andrew Peacock, Marco Ricca, Krista Rossow, Douglas Scaletta, Shutterstock, Max Seigal, Jack Swenson, Rikki Swenson, David Vargas.

Log on to expeditions.com

Find everything you need to dream, research, or plan travel to 60+ destinations worldwide.

- Subscribe to our far-ranging weekly newsletter
- See expeditions.com/stories for articles, videos & Daily Expedition Reports
- Follow us on social media for great posts @lindbladexp on Instagram, Pinterest, and Twitter, and @lindbladexpeditions on Facebook
- Subscribe to our videos on youtube.com/lindbladexpeditions



Reservation Information

Terms & Conditions: For complete terms and conditions please visit expeditions.com/terms

Pricing: For best pricing book early. Prices quoted in this brochure are per person based on double occupancy in USD, and based on select departures. Prices quoted are valid at the time of printing, August 15, 2023, are subject to change and availability at time of booking, and are not guaranteed until required deposit is made. Visit expeditions.com or call for all pricing.

Pricing Includes: All accommodations aboard ship or in hotels per itinerary; all meals as indicated in the itinerary, both aboard and onshore; beer, wine, cocktails and spirits except super-premium brands available for purchase; hors d'oeuvres, excursions and airport transfers to and from recommended flights, as indicated in the itinerary; exploration tools such as kayaks; guidance and company of our leading expedition staff; presentations by expedition staff and expert guest speakers; complimentary reusable water bottle; crew gratuities; services of a medical professional; 24-hour access to exercise equipment; 24-hour access to lounges, observation decks, library, and other shared spaces; park and site entrance fees, special access permits, and port taxes. Unused services or items included in our programs are non-refundable.

Not Included: Airfare (except flights when indicated as included); pre- and post-expedition extensions; additional hotel nights (except when indicated as included); private transfers; laundry, spa treatments, Wi-Fi, and phone services (except when indicated as included); travel protection plans; and passport, visa, and immigration fees.

Airfare: For all programs, airfare is an additional cost unless otherwise indicated. We will gladly assist in making your air arrangements for a \$50 per person service fee.

Reservations, Deposits, and Final Payments: To reserve your place, an advance payment deposit is required at the time of reservation. Receipt of advance payment deposit indicates your acceptance of the terms and conditions. Final payment schedule can be found online. Visit expeditions.com/terms for complete details about deposits and final payment schedules which may vary by ship.

Travel Protection Plan: We strongly recommend that you take advantage of our Travel Protection Plan. This plan offers comprehensive coverage to protect you from cancellation fees, costs incurred due to trip delays/interruption, medical assistance, and damaged or lost baggage, and provides medical assistance and evacuation during your travels. Our Travel Protection Plan

is available for U.S. residents only and may be purchased any time prior to final payment due date. If you are not satisfied for any reason, you may return your plan within 10 days after purchase. Your premium will be refunded if canceled within 10 days, provided you have not already departed on the trip or filed a claim. When so returned, the coverage under the plan is void from the original date of purchase.

Responsibility and Other Terms & Conditions: Certain provisions concerning, among other things, limitations of Lindblad Expeditions' and National Geographic Expeditions' (a division of National Geographic Partners, LLC) liability for loss of property, injury, illness, or death during the voyage will be provided to all guests on the ship's ticket sent prior to departure, and are also available on our website at expeditions.com/terms, or upon request. By registering for a trip, the guest agrees to all such terms and conditions.

Cancellation Policy: Call for details or visit expeditions.com/cancellation-policy

Lindblad Expeditions, LLC is a registered member of the CA Seller of Travel Program #2151120. Registration as a seller of travel does not constitute approval by the State of California.

©2023 Lindblad Expeditions

Lindblad Expeditions and the Eye are the trademarks of Lindblad Expeditions. All rights reserved.

©2023 National Geographic Partners, LLC. All Rights Reserved. NATIONAL GEOGRAPHIC and the Yellow Border are trademarks of National Geographic Society and used with permission.

**For Reservations:
Contact your travel advisor or
Lindblad Expeditions
1.877.689.1962 or 212.261.9000**

**Reservation Hours: Monday - Friday 9am - 8pm ET
Saturday & Sunday 10am - 5pm ET**

Lindblad Expeditions, Inc., 96 Morton Street, New York, NY 10014

**For additional information and online reservations,
visit us at: expeditions.com**



LINDBLAD EXPEDITIONS
96 MORTON STREET, NEW YORK, NY 10014

PRSRT STD
U.S. POSTAGE
PAID
LINDBLAD
EXPEDITIONS

Account Number:



1.877.689.1962 | WWW.EXPEDITIONS.COM OR CALL YOUR TRAVEL ADVISOR

Printed on 10% recycled content paper with soy-based inks. We recommend that you pass this along for others to enjoy or recycle. 100% carbon neutral. Committed to being single-use plastic free. We care deeply about the planet, and travel as a powerful force for good. Learn more at expeditions.com/sustainability

EPC-083

Enjoy a \$1,000 Hotel Credit

Extend your travels pre- or post-voyage with a \$1,000 hotel credit for the shoreside accommodation of your choice. This special offer is available exclusively to past travelers. See page 30 for details.



Scan QR code for details or visit expeditions.com/epic

